

ho•meo•sta•sis™

ho•meo•sta•sis™

A SYSTEM OF MICRO-DILUTION THERAPEUTICS

Complex Guide



The German physician Samuel Hahnemann articulated the principles of homeopathy in his famous work entitled the Organon of the Art of Healing in 1810. The word homeopathy is derived from the Greek roots “omio” (meaning the same) and “pathos” (meaning suffering). One of the principles of homeopathy is that the same entity which causes symptoms of disease in healthy subjects also is able to ameliorate those same symptoms in sick subjects. Hence Hahnemann’s theory “similia similibus curentur” or “Like cures like”. Modern medicine’s priority is to provide symptomatic relief to patients as a strategy to manage disease rather than to understand the basis of disease. Consequently, medicines developed based on that model target symptoms.

Acetaminophen is perhaps the most widely prescribed medicine today. Acetaminophen inhibits the formation of internal biochemical messengers (the prostaglandins) so that the symptoms (headache, pain, inflammation) are in the short term eliminated, however, the reasons for the headache, the pain or the inflammation are not addressed. By contrast homeopathy is a modality that seeks to restore health by understanding the underlying basis of disease.

Homeopathy contradicts the well known dose-response principles of pharmacology. In the case of homeopathy the exact opposite is apparently true – decreasing the dose increases the pharmacological response. Although there is no apparent empirical evidence that supports the plausibility of this theory, an analysis of some 107 controlled clinical trials of efficacy led Dutch researchers (J. Kleijnenhat ,et al., British Medical Journal, 1991) to conclude that there is a legitimate case for the further evaluation of homeopathy. Scottish researchers (D. Reilly, et al. Lancet, 1986) were able to conclude that the placebo effects can not adequately explain the successful clinical responses observed with homeopathic medicines. The mechanistic basis underlying the action of homeopathic medicines represents a confusing challenge to orthodox scientific models which must imply that homeopathy and homeopathic medicines must work by mechanisms other than what scientists currently understand. Medical research certainly acknowledges that the etiologies of most diseases are multifactorial and do not have one single cause or predisposing factor.

The first cellular response after injury is an instinctive attempt to regain biochemical “normality” or homeostasis. It is when the injury to cells exhausts this inherent “homeostatic” repair mechanism that irreversible injury occurs and disease manifests. In a similar way homeopathy is designed to re-establish homeostasis after acute or chronic injury. Homeostasis is a comprehensive line of well researched combinations, formulated by homeopathic practitioners for the well being of your family.

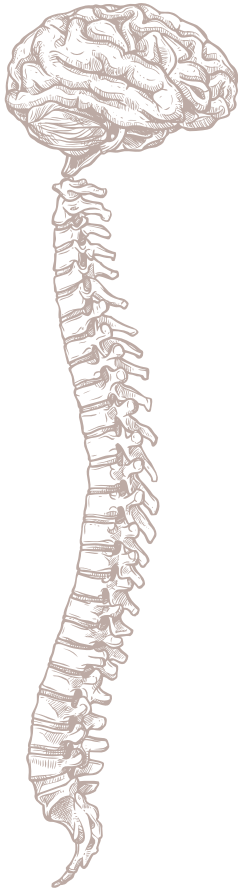
Dinshaw Printer

Certified Homeopath, Ontario

Contents

● Nervous System Disorders	4
● Respiratory System Disorders	8
● Cardiovascular System Disorders	12
● Blood Disorders	14
● Gastrointestinal Disorders	14
Biliary, Hepatic, Pancreatic, Prostatic, Lung, Lymph & Splenic Disorders	20
● Genitourinary Disorders	24
● Female Disorders	28
● Locomotor System Disorders	31
● Skin Disorders	34
● Eye & Ear Disorders	38
● Endocrine Disorders	40
● Psychiatric Disorders	42
● Infection & Fever	43
● Other Disorders	44
GLOSSARY	50

Nervous System Disorders



COMPLEX #01

B-Tonic

DIN-HM 80070486

50 mL

Recommended Use

Homeopathic medicine

Indications

Homeopathic medicine

Medicinal Ingredients (dose per unit)

Aconitum napellus 6X, Belladonna 6X, Cinchona officinalis 6X, Glonoinum 10X, Lycopodium clavatum 6X, Nux vomica 6X, Phosphorus 6X, Sulphur 6X

Recommended Dose

Adults and adolescents 12 and over: Take ten drops three times daily or take as directed by health care practitioner.



COMPLEX #02

EPI

DIN-HM 80072349
50 mL

Recommended Use

For temporary relief of trembling of the limbs and painful cramps, sensation of tearing, heaviness in the limbs.

Indications

This unique combination helps to reduce hardening of the muscles, general debility. Trembling of limbs, shooting pain along limbs, numbness of arms and legs. Cramps in muscles, tearing sensation, burning and pain. Coldness of hands and feet, twitching of muscles and jerkings.

Medicinal Ingredients (dose per unit)

Belladonna 6X, Calcarea carbonica 10X, Causticum 6X, Cicuta virosa 6X, Cuprum metallicum 10X, Hyoscyamus niger 6X, Silicea 10X, Sulphur 6X

Recommended Dose

Adults and adolescents 12 and over: Take ten drops three times daily or take as directed by health care practitioner.



COMPLEX #03

Headache

DIN-HM: 80072766
50 mL

Recommended Use

For temporary relief of pain due to occasional headache.

Indications

Pain and discomfort in the head and upper cervical region. Fatigue of the visual functions. Photophobia and nausea. Headache usually one-sided in migraine. Causes are multiple and varied but mostly just before a cold or infection. Also ageing of the ocular muscles and the lens, from working under poor lighting conditions or from bright stage lights. Symptoms in general, headache with impaired visual activity, tiredness and failure to focus accurately.

Medicinal Ingredients (dose per unit)

Belladonna 6X, Calcarea carbonica 10X, Lachesis mutus 10X, Natrum muriaticum 6X, Nux vomica 6X, Pulsatilla 6X, Sepia 6X, Silicea 10X

Recommended Dose

Adults and adolescents 12 and over: Take ten drops three times daily or take as directed by health care practitioner.

Nervous System Disorders



COMPLEX #04

Memory

DIN-HM 80072350
50 mL

Recommended Use

To temporarily relieve weak concentration, mental weakness, restlessness, nervousness, and impaired memory.

Indications

Neurological illness including degenerative changes in the brain. Also including mental weakness, poor concentration, weak memory and mental decay. Symptoms in general are mental exhaustion, psychological deterioration, associated with physiological and biochemical disturbances.

Medicinal Ingredients (dose per unit)

Anacardium occidentale 6X, Belladonna 6X, Conium maculatum 6X, Hyoscyamus niger 6X, Lachesis mutus 10X, Lycopodium clavatum 6X, Natrum muriaticum 6X, Nux moschata 6X.

Recommended Dose

Adults and adolescents 12 and over: Take ten drops three times daily or take as directed by health care practitioner.



COMPLEX #05

Migraine

DIN-HM 80072097
50 mL

Recommended Use

For temporary relief of symptoms of migraines such as semi-lateral headache with drawing pain; heaviness and trembling of head accompanied by nausea and vomiting.

Indications

Nausea accompanied with headache. Usually cause is unknown, with varied symptoms of fever in acute ear and throat infections. Also tension, anxiety, fear, food allergies, trauma and constipation are some of the causes. In general, the symptoms are dull or throbbing ache, dizziness, nausea, loss of appetite, irritability, etc. Headache often settles behind or around one eye. Nausea, photophobia worse after stress and fatigue.

Medicinal Ingredients (dose per unit)

Belladonna 6X, Calcarea carbonica 10X, Ignatia amara 6X, Nux vomica 6X, Pulsatilla 6X, Sanguinaria canadensis 6X, Sepia 6X, Silicea 10X

Recommended Dose

Adults and adolescents 12 and over: Take ten drops three times daily or take as directed by health care practitioner.



COMPLEX #06

Neuralgia Complex

DIN-HM 80072564
50 mL

Recommended Use

To help relieve pain associated with neuralgia.

Indications

Intermittent attacks of an illness causing piercing pain and affecting the group of cranial nerves. Etiology of illness unknown and no microscopic study of the nerve pathology has been described.

Symptoms include agonizing pain, precipitated by touching “trigger zones”. Usually pain is followed by a dull ache. However, severity of pain is less frequent as the illness progresses.

Medicinal Ingredients (dose per unit)

Aconitum napellus 6X, Arsenicum album 10X, Belladonna 6X, Colocyntis 6X, Gelsemium sempervirens 6X, Magnesia phosphorica 10X, Phosphorus 6X, Spigelia anthelmia 6X

Recommended Dose

Adults and adolescents 12 and over: Take ten drops three times daily or take as directed by health care practitioner.



COMPLEX #07

Sleeplessness

DIN-HM: 80072510
50 mL

Recommended Use

Homeopathic medicine for the relief of occasional sleeplessness

Indications

Failure to sleep adequately at night or to establish a regular sleep pattern. More common indication in the elderly, causes: tension, pain excitement from anticipation over active cerebral illness, depression and restlessness, also caused by dietary excesses of coffee, tea, cocoa and other stimulants. Not getting to sleep or waking prematurely and staying awake are symptoms generally noticed.

Medicinal Ingredients (dose per unit)

Arsenicum album 10X, Bryonia 6X, Calcarea carbonica 10X, Phosphorus 6X, Pulsatilla 6X, Rhus toxicodendron 6X, Sepia 6X, Silicea 10X

Recommended Dose

Adults and adolescents 12 and over: Take ten drops three times daily or take as directed by health care practitioner.

Respiratory System Disorders



COMPLEX #08

Hay Fever

DIN-HM 80072912

50 mL

Recommended Use

For temporary relief of symptoms of hay fever such as sneezing, constant running from nose, itchy, watery eyes and sinus congestion.

Indications

A catarrhal inflammation of the mucous lining of the nose and sinuses. An acute, seasonal, catarrhal allergic complain of the sinuses and nasal mucosa. Causes: usually a viral infection, most likely to occur when resistance and vitality are lowered. Allergy to dust, grass or other pollens. Symptoms: catarrhal discharge, including the symptoms of an acute cold, with running eyes, sneezing, catarrh and insomnia.

Medicinal Ingredients (dose per unit)

Arsenicum album 10X, Calcarea carbonica 10X, Kali bichromicum 6X, Mercurius vivus 10X, Nux vomica 6X, Pulsatilla 6X, Silicea 10X, Sulphur 6X.

Recommended Dose

Adults and adolescents 12 and over: Take ten drops three times daily or take as directed by health care practitioner.



COMPLEX #09

Bactro Plex

DIN-HM 80071539
50 mL

Recommended Use

Nosodes Medicine.

Indications

Inflammation of the throat due to viral or bacterial infection causes soreness, swelling, itching and aching in throat when swallowing, with temporary loss of voice. Membranes, lining the air passages of the lungs when inflamed, causes a cough, a natural reflex of the body to dispel any obstruction in the airway. This remedy provides relief of irritation, soreness of throat and discomfort.

Medicinal Ingredients (dose per unit)

Botulinum 13CH, Colibacillinum 10X, Hydrastis canadensis 8X, Pneumococcinum 13CH, Proteus 13CH, Pseudomonas aeruginosa 13CH, Salmonella typhi 13CH, Scarletinum 13CH, Staphylococcinum 13CH, Streptococcinum 13CH, Tuberculin 13CH

Recommended Dose

Adults and adolescents 13 and over: Take ten drops three times daily or take as directed by health care practitioner.



COMPLEX #10

Viral Plex

DIN-HM: 80071507
50 mL

Recommended Use

Nosodes Medicine.

Indications

Inflammation of the throat due to viral or bacterial infection causes soreness, swelling, itching and aching in throat when swallowing, with temporary loss of voice. Membranes, lining the air passages of the lungs when inflamed, causes a cough, a natural reflex of the body to dispel any obstruction in the airway. This remedy provides relief of irritation, soreness of throat and discomfort.

Medicinal Ingredients (dose per unit)

Coxsackie 13CH, Diphtherinum 13CH, Epstein Barr 13CH, Euphrasia officinalis 8X, Herpes simplex 13CH, Herpes zoster 13CH, Influenzinum 10X, Mononucleosis 13CH, Morbillinum 13CH, Poliomyelitis 13CH

Recommended Dose

Adults and adolescents 13 and over: Take ten drops three times daily or take as directed by health care practitioner.

Respiratory System Disorders



COMPLEX #11

A.S.T.M.

DIN-HM 80072769
50 mL

Recommended Use

Homeopathic remedy for the temporary relief of cough and sore throat.

Indications

Asthma is a disorder that causes the airways of the lungs to swell and contract. The symptomatic consequences are cough with or without sputum and shortness of breath (dyspnoea). These symptoms affect the normal life of an individual suffering from cough and shortness of breath. This product is formulated to provide relief from asthemic symptoms.

Medicinal Ingredients (dose per unit)

Antimonium tartaricum 6X, Arsenicum album 10X, Bryonia 6X, Ipecacuanha 6X, Phosphorus 6X, Pulsatilla 6X, Stannum metallicum 10X, Sulphur 6X

Recommended Dose

Adults and adolescents 13 and over: Take ten drops three times daily or take as directed by health care practitioner.



COMPLEX #12

Coryza

DIN-HM 80073486
50 mL

Recommended Use

For temporary relief of nasal congestion, headache and/or cough associated with the common cold.

Indications

The common cold, is an acute upper respiratory tract infection, usually catarrhal. Cause: an acute viral infection. Symptoms are sneezing, headache, fever, sore throat, swollen eyes and throat, usually with a profuse nasal discharge, either clear or thick and purulent.

Medicinal Ingredients (dose per unit)

Arsenicum album 10X, Belladonna 6X, Bryonia 6X, Calcarea carbonica 10X, Lycopodium clavatum 6X, Mercurius vivus 10X, Nux vomica 6X, Pulsatilla 6X

Recommended Dose

Adults and adolescents 13 and over: Take ten drops three times daily or take as directed by health care practitioner.



COMPLEX #13

Cough Syrup

DIN-HM 80073244
50 mL

Recommended Use

For temporary relief of cough due to common cold.

Indications

An acute viral infection, irritation or inflammation of the membranes lining the air passages of the lung, usually causing a cough. There are several forms of coughing; dry, laryngeal, hoarse, loose, nervous and spasmodic. The cough syrup mixture provides homeopathic management of each symptom and helps relieve discomfort.

Medicinal Ingredients (dose per unit)

Belladonna 6X, Conium maculatum 6X, Drosera 6X, Hepar sulphuris calcareum 10X, Phosphorus 6X, Pulsatilla 6X, Rumex crispus 6X, Sulphur 6X

Recommended Dose

Adults and adolescents 13 and over: Take ten drops three times daily or take as directed by health care practitioner.



COMPLEX #14

Flu Plex

DIN-HM: 80074314
50 mL

Recommended Use

For temporary relief of symptoms of chills and fever associated with cold and flu (influenza).

Indications

Influenza is an acute viral respiratory infection. The onset of trouble is sudden, beginning with chill followed by fever, headaches, muscle aches in the back and limbs, nervousness and weakness. If intestines are involved, diarrhea is also present. Rest and food diet is an important part of the rational treatment for “flu”.

Medicinal Ingredients (dose per unit)

Aconitum napellus 6X, Baptisia tinctoria 6X, Bryonia 6X, Causticum 6X, Eupatorium perfoliatum 6X, Gelsemium sempervirens 6X, Nux vomica 6X, Rhus Toxicodendron 6X

Recommended Dose

Adults and adolescents 13 and over: Take ten drops three times daily or take as directed by health care practitioner.

Cardiovascular System Disorders



COMPLEX #15

V.V. Complex

DIN-HM 80074313

50 mL

Recommended Use

Homeopathic medicine used to temporarily relieve fullness, heaviness, aching pain in legs and mild swelling of ankles and feet.

Indications

Failure of the flow of blood in the veins, usually the legs. May also involve the anal area. Causes: Often due to pregnancy; heredity, occupations with standing for long time, inflammation of the vein due to blood clot. Symptoms include irregular swellings with aching in the area, sometimes an overlying eczema, with redness, itching and irritation, ulcers may occur, with the whole limb swollen and heavy.

Medicinal Ingredients (dose per unit)

Arnica montana 6X, Belladonna 6X, Calcarea carbonica 10X, Lycopodium clavatum 6X, Phosphorus 6X, Pulsatilla 6X, Sepia 6X, Sulphur 6X

Recommended Dose

Adults and adolescents 12 and over: Take ten drops three times daily or take as directed by health care practitioner.



COMPLEX #16

H.T. Complex

DIN-HM 80071197
50 mL

Recommended Use

Homeopathic medicine.

Indications

Homeopathic medicine.

Medicinal Ingredients (dose per unit)

Aconitum napellus 6X, Arsenicum album 10X, Aurum metallicum 10X, Digitalis purpurea 10X, Lachesis mutus 10X, Phosphorus 6X, Pulsatilla 6X, Spigelia anthelmia 6X

Recommended Dose

Adults: Take ten drops three times daily or take as directed by health care practitioner.



COMPLEX #17

H.B.P.

DIN-HM: 80071198
50 mL

Recommended Use

Homeopathic remedy.

Indications

Homeopathic remedy.

Medicinal Ingredients (dose per unit)

Aconitum napellus 6X, Arsenicum album 10X, Aurum metallicum 10X, Calcarea carbonica 10X, Iodine 6X, Phosphorus 6X, Pulsatilla 6X, Spigelia anthelmia 6X

Recommended Dose

Adults: Take ten drops three times daily or take as directed by health care practitioner.

Blood Disorders



COMPLEX #18

Anaemia

DIN-HM 80073131
50 mL

Recommended Use

For temporary relief of weakness associated with anaemia.

Indications

Anaemia is the most common disorder of the blood in which the numbers of red blood cells decrease. Since the red blood cells carry oxygen from the lungs to tissues, a decreased amount of red blood cell would lead to lack of oxygen (hypoxia) in the body. The symptoms of anaemia include weakness, fatigue, shortness of breath and lack of concentration. This homeopathic medicine is used to obtain relief from such symptoms.

Medicinal Ingredients (dose per unit)

Arsenicum album 10X, Calcarea carbonica 10X, Calcarea phosphorica 10X, Cinchona officinalis 6X, Ferrum metallicum 10X, Kali carbonicum 6X, Natrum muriaticum 6X, Phosphorus 6X

Recommended Dose

Adults and adolescents 12 and over: Take ten drops three times daily or take as directed by health care practitioner.

Gastrointestinal Disorders



COMPLEX #19

Constipation

DIN-HM 80073916
50 mL

Recommended Use

For temporary relief of abdominal discomfort due to constipation and flatulence

Indications

Constipation is a condition in which bowel movements are infrequent or hard to pass. This may lead to painful defecation.

Constipation can be followed with many other causes. Flatulence is the release of gas through the rectum as a by-product of the digestion process. Diarrhoea is a condition in which a person has loose or frequent bowel movements. This remedy is used to obtain relief from constipation, flatulence and diarrhoea.

Medicinal Ingredients (dose per unit)

Bryonia 6X, Graphites 10X, Lycopodium clavatum 6X, Natrum muriaticum 6X, Nux vomica 6X, Plumbum metallicum 10X, Sulphur 6X

Recommended Dose

Adults and adolescents 12 and over: Take ten drops three times daily or take as directed by health care practitioner.



COMPLEX #20

Diarrhoea

DIN-HM 80073920
50 mL

Recommended Use

For temporary relief of diarrhoea.

Indications

An infection by virus or unsuitable food, causing frequency of bowel movements with abdominal pain, loose and watery stools, cramps and fever. Diarrhoea may be with blood and mucus, acute or chronic requiring long term treatment. General symptoms are abdominal pain, distension, burning and itching in anus, bleeding and prolapse of the pile masses.

Medicinal Ingredients (dose per unit)

Arsenicum album 10X, Chamomilla 6X, Cinchona officinalis 6X, Dulcamara 6X, Phosphorus 6X, Pulsatilla 6X, Sulphur 6X, Veratrum album 6X

Recommended Dose

Adults and adolescents 12 and over: Take ten drops three times daily or take as directed by health care practitioner.



COMPLEX #21

Haemorrhoid

DIN-HM: 80074315
50 mL

Recommended Use

For temporary relief of burning, pain and itching associated with haemorrhoid and anal fissure.

Indications

Haemorrhoids (piles) of the anal vessels. Causes are pregnancy, constipation, unbalanced diet, sedentary habits, and cirrhosis of the liver. Symptoms include pain, itching, discomfort, bleeding, prolapse of the pile masses.

Medicinal Ingredients (dose per unit)

Aesculus hippocastanum 6X, Aloe socotrina 6X, Carbo vegetabilis 10X, Causticum 6X, Muriaticum acidum 10X, Nitricum acidum 10X, Nux vomica 6X, Sulphur 6X

Recommended Dose

Adults and adolescents 12 and over: Take ten drops three times daily or take as directed by health care practitioner.

Gastrointestinal Disorders



COMPLEX #22

Dyspepsia

DIN-HM 80076476
50 mL

Recommended Use

For temporary relief from symptoms of dyspepsia such as flatulence and nausea.

Indications

Inability to digest meals without pain or discomfort. A peptic ulcer, or infection, dietary and medications are the main causes, general symptoms are, pain, flatulence, nausea, discomfort, lack of appetite.

Medicinal Ingredients (dose per unit)

Antimonium crudum 10X, Calcarea carbonica 10X, Carbo vegetabilis 10X, Cinchona officinalis 6X, Ipecacuanha 6X, Nux vomica 6X, Pulsatilla 6X, Sulphur 6X

Recommended Dose

Adults and adolescents 12 and over: Take ten drops three times daily or take as directed by health care practitioner.



COMPLEX #23

Intestinal Colic

DIN-HM 80073485
50 mL

Recommended Use

For the temporary relief from abdominal pain.

Indications

A complete or partial blockage of the intestines. An acute inflammation or infection of the intestinal tract. A growth may also cause colic by obstructing the bowel. Causes are infected food, salmonella, poor culinary hygiene, inadequately cooked infected or frozen food. Symptoms include colicky abdominal pain, severe diarrhoea, and vomiting, collapse, weakness, sweating.

Medicinal Ingredients (dose per unit)

Belladonna 6X, Chamomilla 6X, Cocculus indicus 6X, Colocynthis 6X, Dioscorea villosa 6X, Lycopodium clavatum 6X, Nux vomica 6X, Veratrum album 6X

Recommended Dose

Adults and adolescents 12 and over: Take ten drops three times daily or take as directed by health care practitioner.



COMPLEX #24

N&V Complex

DIN-HM 80073143
50 mL

Recommended Use

Homeopathic medicine.

Indications

Homeopathic medicine.

Medicinal Ingredients (dose per unit)

Arsenicum album 10X, Bryonia 6X, Ipecacuanha 6X, Nux vomica 6X, Phosphorus 6X, Pulsatilla 6X, Sulphur 6X, Veratrum album 6X

Recommended Dose

Adults and adolescents 12 and over: Take ten drops three times daily or take as directed by health care practitioner.



COMPLEX #25

Stomach Tonic

DIN-HM: 80075307
50 mL

Recommended Use

For temporary relief from irritation of mouth, tongue and stomach.

Indications

Ulcerated gums, tongue cracked and mouth exceedingly offensive, due to inflammation of the mucous membranes of the mouth and tongue. Causes are fungal and viral infections, nutritional deficiencies, allergic reaction to chemicals in toothpastes, mouth wash, food-additives and allergies, lipsticks and sweets. Loss of taste, soreness and offensive odour are principal symptoms of "stomatitis glossitis".

Medicinal Ingredients (dose per unit)

Arsenicum album 10X, Bryonia 6X, Calcarea carbonica 10X, Carbo vegetabilis 10X, Lycopodium clavatum 6X, Nux vomica 6X, Pulsatilla 6X, Sulphur 6X

Recommended Dose

Adults and adolescents 12 and over: Take ten drops three times daily or take as directed by health care practitioner.

Gastrointestinal Disorders



COMPLEX #26

Toothache

DIN-HM 80076477
50 mL

Recommended Use

For temporary relief of toothache.

Indications

An acute or dull pain in the mouth, teeth and gums, sometimes radiating to the face, the orbit of the eye and the opposite jaw. Causes: caries of teeth or root-abscess formations. A dull ache, at times throbbing, with a swelling of the face and jaw. Symptoms: tenderness, swelling and pain.

Medicinal Ingredients (dose per unit)

Belladonna 6X, Calcarea carbonica 10X, Chamomilla 6X, Mercurius vivus 10X, Nux vomica 6X, Pulsatilla 6X, Staphysagria 6X, Sulphur 6X

Recommended Dose

Adults and adolescents 12 and over: Take ten drops three times daily or take as directed by health care practitioner.



COMPLEX #27

Worms

DIN-HM 80075391
50 mL

Recommended Use

For relief from anal itch, abdominal pain and stools related discomfort associated with intestinal worms.

Indications

Intestinal parasites present in the large or small intestine causes an infection. Anaemia, pain, constipation or diarrhoea may accompany. This combination will alleviate symptoms of anal irritation, itching, variable appetite, restlessness, ineffective and frequent defecation.

Medicinal Ingredients (dose per unit)

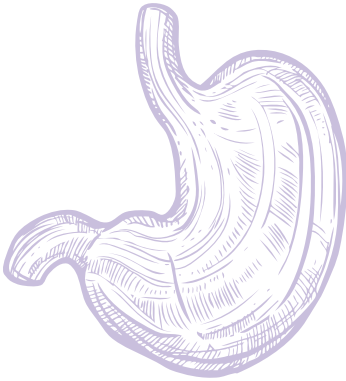
Calcarea carbonica 10X, Cina 6X, Graphites 10X, Mercurius vivus 10X, Sabadilla 6X, Silicea 10X, Spigelia anthelmia 6X, Sulphur 6X

Recommended Dose

Adults and adolescents 12 and over: Take ten drops three times daily or take as directed by health care practitioner.



Biliary, Hepatic, Pancreatic, Prostatic, Lung, Lymph & Splenic Disorders



COMPLEX #28

BIL Complex

DIN-HM 80073169

50 mL

Recommended Use

Homeopathic medicine

Indications

Homeopathic medicine

Medicinal Ingredients (dose per unit)

Arsenicum album 10X, Bryonia 6X,
Chamomilla 6X, Cinchona officinalis 6X,
Mercurius vivus 10X, Nux vomica 6X,
Pulsatilla 6X, Veratrum album 6X

Recommended Dose

Adults and adolescents 12 and over: Take ten drops three times daily or take as directed by health care practitioner.



COMPLEX #29

LIV Tonic

DIN-HM 80073167
50 mL

Recommended Use

Homeopathic medicine

Indications

Homeopathic medicine

Medicinal Ingredients (dose per unit)

Bryonia 6X, Cinchona officinalis 6X, Lachesis mutus 10X, Lycopodium clavatum 6X, Magnesia muriatica 6X, Mercurius vivus 10X, Nux vomica 6X, Sulphur 6X

Recommended Dose

Adults: Take ten drops three times daily or take as directed by health care practitioner.



COMPLEX #30

LNG

DIN-HM: 80073196
50 mL

Recommended Use

Homeopathic remedy

Indications

Homeopathic remedy

Medicinal Ingredients (dose per unit)

Aconitum napellus 6X, Antimonium tartaricum 6X, Arsenicum album 10X, Bryonia 6X, Hepar sulphuris calcareum 10X, Lycopodium clavatum 6X, Phosphorus 6X, Sulphur 6X

Recommended Dose

Adults: Take ten drops three times daily or take as directed by health care practitioner.

Biliary, Hepatic, Pancreatic, Prostatic, Lung, Lymph & Splenic Disorders



COMPLEX #31

Lympho Plex

DIN-HM 80075851
50 mL

Recommended Use

For the temporary relief of itching and scratchy feelings in skin and pain in the hips, back, legs and arms.

Indications

An acute infection by micro-organism (streptococcal), where there is spreading inflammation of tissue beneath the skin. Habitual tendency towards retention of toxins at the tissue level. General causes are viral or bacterial infections. Symptoms are pain, high fever, degenerative conditions of cellular ailments, inflammations and infections.

Medicinal Ingredients (dose per unit)

Calcarea carbonica 10X, Causticum 6X, Graphite 10X, Hepar sulfuris calcareum 10X, Lachesis mutus 10X, Lycopodium clavatum 6X, Mercurius vivus 10X, Rhus toxicodendron 6X

Recommended Dose

Adults and adolescents 12 and over: Take ten drops three times daily or take as directed by health care practitioner.



COMPLEX #32

Pan Complex

DIN-HM 80075399
50 mL

Recommended Use

For the temporary relief from abdominal pain.

Indications

A complete or partial blockage of the intestines. An acute inflammation or infection of the intestinal tract. A growth may also cause colic by obstructing the bowel. Causes are infected food, salmonella, poor culinary hygiene, inadequately cooked infected or frozen food. Symptoms include colicky abdominal pain, severe diarrhoea, and vomiting, collapse, weakness, sweating.

Medicinal Ingredients (dose per unit)

Belladonna 6X, Chamomilla 6X, Cocculus indicus 6X, Colocynthis 6X, Dioscorea villosa 6X, Lycopodium clavatum 6X, Nux vomica 6X, Veratrum album 6X

Recommended Dose

Adults and adolescents 12 and over: Take ten drops three times daily or take as directed by health care practitioner.



COMPLEX #33

Prostate

DIN-HM 80076272
50 mL

Recommended Use

For the temporary relief from abdominal pain, frequent urination and pain or burning sensation while urinating.

Indications

Prostate problems of an acute or chronic nature, inflammation of the prostate gland, with unnatural enlargement (hypertrophy). General symptoms are frequent urination usually excessive at night, weak force of urination, dribbling, straining, and burning while urinating.

Medicinal Ingredients (dose per unit)

Conium maculatum 6X, Lycopodium clavatum 6X, Pulsatilla 6X, Selenium metallicum 10X, Sepia 6X, Staphysagria 6X, Sulphur 6X, Thuja occidentalis 6X

Recommended Dose

Male Adults: Take ten drops three times daily or take as directed by health care practitioner.



COMPLEX #34

SPL

DIN-HM: 80073147
50 mL

Recommended Use

Homeopathic medicine.

Indications

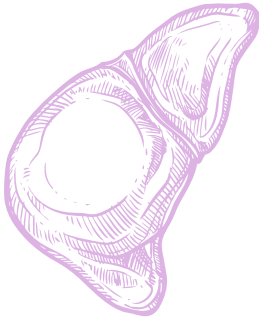
Homeopathic medicine.

Medicinal Ingredients (dose per unit)

Arsenicum album 10X, Capsicum annuum 6X, Carbo vegetabilis 10X, Cinchona officinalis 6X, Ignatia amara 6X, Natrum muriaticum 6X, Nux vomica 6X, Sulphur 6X

Recommended Dose

Adults and adolescents 12 and over: Take ten drops three times daily or take as directed by health care practitioner.



COMPLEX #35

Bed Wetting

DIN-HM 80077044

50 mL

Recommended Use

For temporary relief from bed wetting.

Indications

Loss of normal bladder control associated with bed-wetting and inability to retain discharges, as incontinence of urine. Causes are infection, senility, confusional states, psychological, and prostatic disorders following surgery. Symptom: bed wetting by day or night or both.

Medicinal Ingredients (dose per unit)

Belladonna 6X, Causticum 6X, Cina 6X, Nux vomica 6X, Pulsatilla 6X, Rhus toxicodendron 6X, Silicea 10X, Sulphur 6X

Recommended Dose

Adults and adolescents 12 and over: Take ten drops three times daily or take as directed by health care practitioner.



COMPLEX #36

NEP Complex

DIN-HM 80074204
50 mL

Recommended Use

Homeopathic medicine

Indications

Homeopathic medicine

Medicinal Ingredients (dose per unit)

Apis mellifica 6X, Belladonna 6X, Cantharis 6X, Lycopodium clavatum 6X, Nux vomica 6X, Pulsatilla 6X, Sepia 6X, Sulphur 6X

Recommended Dose

Adults: Take ten drops three times daily or take as directed by health care practitioner.



COMPLEX #37

MV Plex

DIN-HM: 80074206
50 mL

Recommended Use

Homeopathic medicine

Indications

Homeopathic medicine

Medicinal Ingredients (dose per unit)

Calcarea carbonica 10X, Lycopodium clavatum 6X, Mercurius vivus 10X, Nitricum acidum 10X, Nux vomica 6X, Sepia 6X, Sulphur 6X, Thuja occidentalis 6X

Recommended Dose

Male Adults: Take ten drops three times daily or take as directed by health care practitioner.

Genitourinary Disorders



COMPLEX #38

Cystitis

DIN-HM 80077135

50 mL

Recommended Use

For temporary relief of symptoms of urinary bladder inflammation.

Indications

Painful frequent urination day or night, which may be foul smelling, cloudy and occasionally bloody, is the result of inflammation of the urinary bladder or urethra. Usually caused by infection, diabetes mellitus, loss of bladder tone, crystalline deposits in the urine, tumor etc. Frequency of urination is the precipitated symptom, with urgency or pain.

Medicinal Ingredients (dose per unit)

Apis mellifica 6X, Arsenicum album 10X, Cantharis 6X, Lycopodium clavatum 6X, Mercurius corrosivus 10X, Nitricum acidum 10X, Terebinthina 6X

Recommended Dose

Adults and adolescents 12 and over: Take ten drops three times daily or take as directed by health care practitioner.



COMPLEX #39

Urinary Tract Infection

DIN-HM 80077192

50 mL

Recommended Use

To temporary relieve symptoms associated with lower urinary tract infection.

Indications

Inflammation of urinary bladder or urethra resulting in the inability to pass urine & empty the bladder. General causes are infection, diabetes, loss of bladder tone, emotion, senility, post-operational & crystalline deposits in the urine. This combination is use for in paralysis of bladder & retention of urine after surgery.

Medicinal Ingredients (dose per unit)

Aconitum napellus 6X, Arsenicum album 10X, Belladonna 6X, Cantharis 6X, Causticum 6X, Lycopodium clavatum 6X, Nux vomica 6X, Pulsatilla 6X

Recommended Dose

Adults and adolescents 12 and over: Take ten drops three times daily or take as directed by health care practitioner.



COMPLEX #40

B Plex

DIN-HM 80074203

50 mL

Recommended Use

Homeopathic medicine

Indications

Homeopathic medicine

Medicinal Ingredients (dose per unit)

Aconitum album 10X, Carbo animalis 10X, Conium maculatum 6X, Graphites 10X, Hydrastis canadensis 6X, Kreosotum 10X, Phosphorus 6X, Silicea 10X

Recommended Dose

Adults and adolescents 12 and over: Take ten drops three times daily or take as directed by health care practitioner.



COMPLEX #41

FV Tonic

DIN-HM 80074516
50 mL

Recommended Use

Homeopathic medicine

Indications

Homeopathic medicine

Medicinal Ingredients (dose per unit)

Belladonna 6X, Calcarea carbonica 10X, Kreosotum 10X, Nux vomica 6X, Platinum metallicum 10X, Pulsatilla 6X, Sepia 6X, Sulphur 6X

Recommended Dose

Female Adults: Take ten drops three times daily or take as directed by health care practitioner.



COMPLEX #42

V Itch

DIN-HM 80076271
50 mL

Recommended Use

For temporary relief from pain and dryness in vagina.

Indications

Inflammatory conditions of the pelvic organ and genito-urinary tract. Infection with effects of pelvic trauma, ovarian cysts and tumor. Inflammation of the womb and of the neck of the uterus; vaginal infection due to a wide variety of agents (candida) causing white creamy, yellow or greenish vaginal discharges. Causes: swelling, redness, intense itching, burning, raw and tender vaginal and labial mucosa. Symptoms: pain, vaginitis, vomiting, diarrhea and sterility.

Medicinal Ingredients (dose per unit)

Belladonna 6X, Berberis vulgaris 6X, Kreosotum 10X, Mercurius vivus 10X, Platinum metallicum 10X, Sepia 6X, Sulphur 6X, Thuja occidentalis 6X

Recommended Dose

Female Adults: Take ten drops three times daily or take as directed by health care practitioner.

Female Disorders



COMPLEX #43

Menopause

DIN-HM: 80077134
50 mL

Recommended Use

To temporarily relieve symptoms of menopause such as insomnia, headaches.

Indications

The period of a women's life during which the menses cease. It causes the end of the active reproductive cycle of ovulation, general diminution in the menstrual flow, and nervous disturbances such as mental unrest. Most common symptoms are hot flashes, mental depression, emotional tension, irritability, sexual apathy and psychological problems.

Medicinal Ingredients (dose per unit)

Cimicifuga racemosa 6X, Glonoinum 10X, Kalium bromatum 6X, Lachesis mutus 10X, Pulsatilla 6X, Sepia 6X, Sulphur 6X, Ustilago maidis 6X

Recommended Dose

Female Adults: Take ten drops three times daily or take as directed by health care practitioner.



COMPLEX #44

Menses

DIN-HM 80077133
50 mL

Recommended Use

For temporary relief from the discomfort of menses.

Indications

Absence of menstruation after the normal cycle has been established at puberty, failure to menstruate regularly, as usual. This homeopathic medicine is used for obtaining relief of symptoms of leucorrhoea, metrorrhagia and menorrhagia including abdominal pain, weakness & headache.

Medicinal Ingredients (dose per unit)

Calcarea carbonica 10X, Graphites 10X, Kali carbonicum 6X, Lycopodium clavatum 6X, Phosphorus 6X, Pulsatilla 6X, Sepia 6X, Sulphur 6X

Recommended Dose

Female Adults: Take ten drops three times daily or take as directed by health care practitioner.

Locomotor System Disorders



COMPLEX #45

Cramps

DIN-HM 80077575
50 mL

Recommended Use

To provide temporary relief from muscular soreness and cramps

Indications

Limb cramps in calf muscle with torn joint ligaments, stretched soft tissues, sprain and bruised muscles. Acute trauma, slipping or failing may cause pain, incapacity, swelling, and muscular tenderness. This combination medicine relieves a wide spectrum of antispasmodic ailments.

Medicinal Ingredients (dose per unit)

Belladonna 6X, Calcarea carbonica 10X, Causticum 6X, Colocynthis 6X, Cuprum metallicum 10X, Lycopodium clavatum 6X, Nux vomica 6X, Sulphur 6X

Recommended Dose

Adults and adolescents 12 and over: Take ten drops three times daily or take as directed by health care practitioner.



COMPLEX #46

Joints Plex

DIN-HM 80077255
50 mL

Recommended Use

For temporary relief of joint pain and stiffness associated with arthritic conditions.

Indications

Arthritis is a disease affecting the structures in and above the joints. The chronic form is characterized by an increasing amount of solid deposits in the joints. This combination medicine would help reduce painful affection of arthritis deforms, produce functional mobility to the joints and alleviate discomfort by motion.

Medicinal Ingredients (dose per unit)

Bryonia 6X, Causticum 6X, Kali carbonicum 6X, Ledum palustre 6X, Mercurius vivus 10X, Pulsatilla 6X, Rhus toxicodendron 6X, Sulphur 6X

Recommended Dose

Adults: Take ten drops three times daily or take as directed by health care practitioner.

Locomotor System Disorders



COMPLEX #47

Pain Relief Plus

DIN-HM: 80077257

50 mL

Recommended Use

For temporary relief of neuralgia pain involving the muscle, lower back and sciatica.

Indications

It is said that “pain is a prayer of a nerve for relief”. Pain is not a disease but a symptom present in the majority of sickness affecting the human body. Any disturbance in the nerve tissue is transmitted to the brain as a painful sensation. Pain is therefore, primarily a warning signal, while uncomfortable, it is very valuable. The composition of this medicine corrects the underlying causes of pain. It is therefore the natural and rational way to relieve pain for sciatica and lumbago.

Medicinal Ingredients (dose per unit)

Arsenicum album 10X, Belladonna 6X, Bryonia 6X, Colocynthis 6X, Magnesia phosphorica 10X, Nux vomica 6X, Phytolacca decandra 6X, Rhus toxicodendron 6X

Recommended Dose

Adults and adolescents 12 and over: Take ten drops three times daily or take as directed by health care practitioner.



COMPLEX #48

Sprain & Strain

DIN-HM 80077258

50 mL

Recommended Use

For temporary relief of pain and soreness associated with sprains, minor wounds and non-serious injuries.

Indications

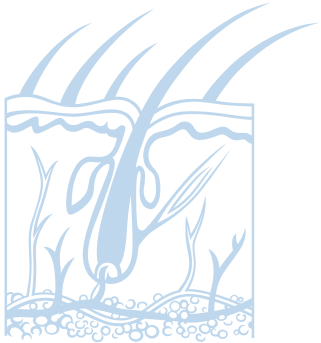
Muscles, tendons, soft tissues and ligaments may be stretched, torn and bruised. Causes are due to repetitive strain injury, falling, acute trauma & slipping. Symptoms include agonizing neuralgic pain, swelling, bruising, incapacity of joints to functions. This combination helps on joints generally and neuralgia of bones.

Medicinal Ingredients (dose per unit)

Arnica montana 6X, Calcarea carbonica 10X, Causticum 6X, Phosphorus 6X, Pulsatilla 6X, Rhododendron chrysanthum 6X, Rhus toxicodendron 6X, Sulphur 6X

Recommended Dose

Adults and adolescents 12 and over: Take ten drops three times daily or take as directed by health care practitioner.



COMPLEX #49

Acne

DIN-HM 80077260

50 mL

Recommended Use

For temporary relief from acne.

Indications

A chronic inflammation of the glands of the skin, with infection and eruption of red areas, usually on the face (acne). Irritation, infection, pain, discharge and discomfort are common symptoms of acne. Causes include excess carbohydrate diet, constitutional common at puberty, elevation in hormones, lack of hygiene, anxiety, excessive humidity and certain medication.

Medicinal Ingredients (dose per unit)

Arsenicum album 10X, Belladonna 6X, Carbo vegetabilis 10X, Hepar sulphuris calcareum 10X, Kalium bromatum 6X, Nux vomica 6X, Sepia 6X, Sulphur 6X

Recommended Dose

Adults and adolescents 12 and over: Take ten drops three times daily or take as directed by health care practitioner.



COMPLEX #50

Eczema

DIN-HM 80076546
50 mL

Recommended Use

For temporary relief from the symptoms of eczema such as blisters, dry skin, skin redness or inflammation.

Indications

An inflammation characterized by redness, irritation, multiple small vesicles, serous discharge, ulceration and crusting. Causes are unknown, but often hereditary. Associated with bronchial asthma, hay-fever and other allergic conditions. Stress is a precipitating factor. Pain, itching, burning, discomfort, pruritus are the dominating symptoms.

Medicinal Ingredients (dose per unit)

Arsenicum album 10X, Calcareo carbonica 10X, Dulcamara 6X, Graphite 10X, Lycopodium clavatum 6X, Rhus toxicodendron 6X, Sepia 6X, Sulphur 6X

Recommended Dose

Adults and adolescents 12 and over: Take ten drops three times daily or take as directed by health care practitioner.

COMPLEX #51

Shingles

DIN-HM 80077463
50 mL

Recommended Use

To temporary relieve symptoms of shingles such as abdominal pain, blisters and red patches.

Indications

Shingles also known as herpes zoster is an infection with the chicken-pox virus in the elderly, forming large vesicles along the pathways of the affected nerves. Viral infection is the cause. General symptoms are, an eruption of vesicles, pain, irritation, insomnia, followed by scars and in some cases, neuralgia after the attack.

Medicinal Ingredients (dose per unit)

Arsenicum album 10X, Dulcamara 6X, Graphites 10X, Mercurius vivus 10X, Natrum muriaticum 6X, Rhus toxicodendron 6X, Sepia 6X, Sulphur 6X

Recommended Dose

Adults and adolescents 12 and over: Take ten drops three times daily or take as directed by health care practitioner.



COMPLEX #52

Leu Complex

DIN-HM: 80074770
50 mL

Recommended Use

Homeopathic medicine

Indications

Homeopathic medicine

Medicinal Ingredients (dose per unit)

Arsenicum album 10X, Arsenicum sulphuratum flavum 10X, Calcearia carbonica 10X, Phosphorus 6X, Psoralea corylifolia 24X, Sepia 6X, Silicea 10X, Sulphur 6X

Recommended Dose

Adults and adolescents 12 and over: Take ten drops three times daily or take as directed by health care practitioner.



COMPLEX #53

Psoriasis Complex

DIN-HM 80077469
50 mL

Recommended Use

For the temporary relief from symptoms of psoriasis such as skin redness, irritation and scales.

Indications

A non-infective chronic skin disorder characterized by dry, white scaly, and red flaking areas, without vesicle formation, often in the flexure areas such as elbows, knees and wrists. Causes are unknown but there is often a hereditary tendency.

Medicinal Ingredients (dose per unit)

Calcearia carbonica 10X, Graphites 10X, Lycopodium clavatum 6X, Mercurius vivus 10X, Petroleum 6X, Phosphorus 6X, Sepia 6X, Sulphur 6X

Recommended Dose

Adults and adolescents 12 and over: Take ten drops three times daily or take as directed by health care practitioner.



COMPLEX #54

Scalp Tonic

DIN-HM: 80077466
50 mL

Recommended Use

For the temporary relief from burns and eczema of scalp and painful scalp.

Indications

An inflammation characterized by redness, irritation, multiple small vesicles, serous discharges, ulceration and crusting. Also a severe contagious disorder of children and adults with flaking scales, usually of the scalp. Causes: unknown, but often hereditary; associated with bronchial asthma, hay-fever, and other allergic conditions. Stress is a precipitating factor. General symptoms are pain, itching, burning, pruritus etc.

Medicinal Ingredients (dose per unit)

Arsenicum album 10X, Calcarea carbonica 10X, Graphites 10X, Mercurius vivus 10X, Natrum muriaticum 6X, Phosphorus 6X, Sepia 6X, Sulphur 6X

Recommended Dose

Adults and adolescents 12 and over: Take ten drops three times daily or take as directed by health care practitioner.



COMPLEX #55

Warts

DIN-HM 80077565
50 mL

Recommended Use

For the temporary relief from warts.

Indications

A benign overgrowth of the outer layer of the skin, There are often various causes, however, emotional or hereditary are primary. Warts often disappear without treatment. Those on the sole of the foot are especially painful.

Medicinal Ingredients (dose per unit)

Calcarea carbonica 10X, Causticum 6X, Nitricum acidum 10X, Rhus toxicodendron 6X, Sepia 6X, Silicea 10X, Sulphur 6X, Thuja occidentalis 10X

Recommended Dose

Adults and adolescents 12 and over: Take ten drops three times daily or take as directed by health care practitioner.



COMPLEX #56

Ear Tonic

DIN-HM: 80077607

50 mL

Recommended Use

For temporary relief from inflammation or infection of ear, balance and impaired hearing.

Indications

Generally common acute infection of the middle ear (otitis media) in children. In the elderly: usually loss of hearing (deafness). Cause in children is usually unknown, but normally follows a chill or exposure to draft. May be an acute infection from the throat or a blood borne infection. General symptoms: severe, unbearable throbbing pain, fever, redness, sweating and headache. For elderly, causes are degeneration, noise pollution and inflammation. Symptoms: complete loss or loss of certain notes and sounds. Often worse in a noisy room or when addressed directly.

Medicinal Ingredients (dose per unit)

Belladonna 6X, Calcarea carbonica 10X, Causticum 6X, Graphites 10X, Lycopodium clavatum 6X, Mercurius vivus 10X, Pulsatilla 6X, Sulphur 6X

Recommended Dose

Adults and adolescents 12 and over: Take ten drops three times daily or take as directed by health care practitioner.



COMPLEX #57

Vertigo

DIN-HM 80077574

50 mL

Recommended Use

To temporarily relieve dizziness and vertigo.

Indications

A sensation of dizziness and giddiness defines vertigo. A symptom of many diseases, including epilepsy, anxiety, neurosis, lesions of the vestibular pathways, Meniere's disease, cerebellum and brainstem. The predominant symptom is a subjective sensation of rotation of the environment or of the patient.

Medicinal Ingredients (dose per unit)

Aconitum napellus 6X, Belladonna 6X, Bryonia 6X, Calcarea carbonica 10X, Nuxvomica 6X, Phosphorus 6X, Pulsatilla 6X, Sulphur 6X

Recommended Dose

Adults and adolescents 12 and over: Take ten drops three times daily or take as directed by health care practitioner.



COMPLEX #58

Cataract Plex

DIN-HM: 80076870
50 mL

Recommended Use

To help support people with cataracts.

Indications

Cataract is a clouding of the crystalline lens in the eye obscuring vision. If cataract is untreated, it can lead to blindness over time. Loss of visual acuity, loss of colour vision, veiling glare are some of the symptoms associated with cataract. This homeopathy remedy is used to help support people with cataract.

Medicinal Ingredients (dose per unit)

Calcarea carbonica 10X, Causticum 6X, Conium maculatum 6X, Phosphorus 6X, Pulsatilla 6X, Sepia 6X, Silicea 10X, Sulphur 6X

Recommended Dose

Adults: Take ten drops three times daily or take as directed by health care practitioner.



COMPLEX #59

Eye Tonic

DIN-HM 80076868
50 mL

Recommended Use

For the temporary relief of pain, itching and discomfort due to dry eyes or conjunctivitis (pink eye)

Indications

“Eye tonic” preparation has multiple use for eye disorders such as inflammation of the eye, pain, eye strain and discomfort due to dry eye and/or symptoms of conjunctivitis (commonly known as pink eye).

Medicinal Ingredients (dose per unit)

Apis mellifica 6X, Arsenicum album 10X, Belladonna 6X, Calcarea carbonica 10X, Euphrasia officinalis 6X, Mercurius vivus 10X, Pulsatilla 6X, Sulphur 6X

Recommended Dose

Adults and adolescents 12 and over: Take ten drops three times daily or take as directed by health care practitioner.



COMPLEX #60

DB Plex

DIN-HM 80076864

50 mL

Recommended Use

For temporary relief from frequent urination, nausea, headache, decreased appetite, debility, itching skin.

Indications

Diabetes is a disorder in which the body fails to regulate blood sugar levels. The body has difficulty in utilizing glucose generated due to a faulty carbohydrate metabolism. Causes are unknown, however genetic or viral factors are thought to play an important role. The excess blood sugar damages blood vessels and other organs.

Medicinal Ingredients (dose per unit)

Argentum metallicum 10X, Helonias dioica 6X, Lycopodium clavatum 6X, Natrum muriaticum 6X, Phosphoricum acidum 6X, Scilla maritima 6X, Sulphur 6X, Terebinthina 6X

Recommended Dose

Adults and adolescents 12 and over: Take ten drops three times daily or take as directed by health care practitioner.



COMPLEX #61

OB Complex

DIN-HM 80074772
50 mL

Recommended Use

Homeopathic medicine

Indications

Homeopathic medicine

Medicinal Ingredients (dose per unit)

Antimonium crudum 10X, Calcarea carbonica 10X, Capsicum annum 6X, Ferrum metallicum 10X, Graphites 10X, Kali bichromicum 6X, Pulsatilla 6X, Sulphur 6X

Recommended Dose

Adults and adolescents 12 and over: Take ten drops three times daily or take as directed by health care practitioner.



COMPLEX #62

Thy Plex

DIN-HM 80074775
50 mL

Recommended Use

Homeopathic remedy

Indications

Homeopathic remedy

Medicinal Ingredients (dose per unit)

Ammonium carbonicum 6X, Belladonna 6X, Bromium 10X, Calcarea carbonica 10X, Iodium 6X, Kali iodatum 6X, Natrum muriaticum 6X, Spongia tosta 6X

Recommended Dose

Adults and adolescents 12 and over: Take ten drops three times daily or take as directed by health care practitioner.



COMPLEX #63

Chronic Fatigue

DIN-HM: 80077602

50 mL

Recommended Use

For relief from heaviness, tiredness and numbness in limbs.

Indications

Tiredness, lassitude and absence of energy are indicative of fatigue, syndrome. Some of the may causes are, failure to lead a regulated life, anaemia, infection, post-surgical, internal secretion and convalescence. Symptoms are lack of energy and exhaustion.

Medicinal Ingredients (dose per unit)

Calcarea carbonica 10X, Cinchona officinalis 6X, Ignatia amara 6X, Lachesis mutus 10X, Nux vomica 6X, Phosphorus 6X, Sepia 6X, Sulphur 6X

Recommended Dose

Adults and adolescents 12 and over: Take ten drops three times daily or take as directed by health care practitioner.



COMPLEX #64

ANX Plex

DIN-HM 80077610

50 mL

Recommended Use

For temporary relief from restlessness, nervous excitement and hastiness.

Indications

An emotional state of uneasiness (anxiety) and tension, that causes a trauma or happening in a sensitive individual. Other causes may be, hereditary, temperament, familial etc. Symptoms usually are worry, failure to relax, fear, insomnia, and lack of confidence.

Medicinal Ingredients (dose per unit)

Aconitum napellus 6X, Arsenicum album 10X, Calcarea carbonica 10X, Nux vomica 6X, Phosphorus 6X, Pulsatilla 6X, Rhus toxicodendron 6X, Sulphur 6X

Recommended Dose

Adults and adolescents 12 and over: Take ten drops three times daily or take as directed by health care practitioner.

Infection & Fever



COMPLEX #65

Fever Plex

DIN-HM: 80077371

50 mL

Recommended Use

Homeopathic remedy used for relief of fever.

Indications

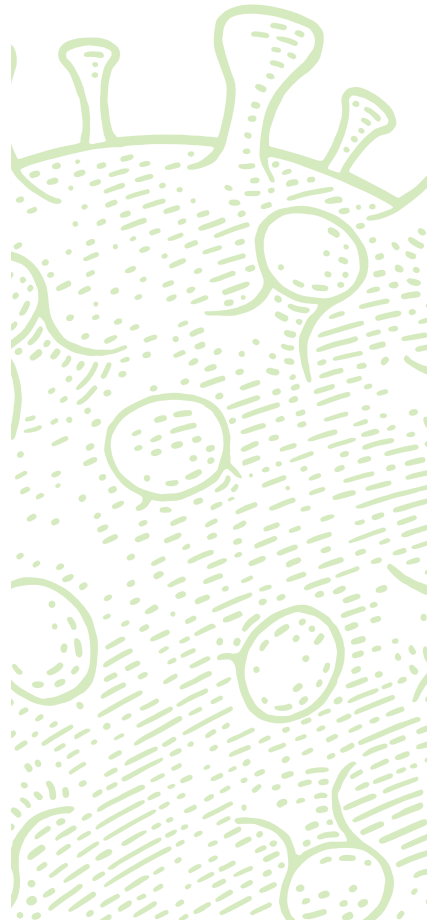
Although, all the following remedies have the reputation of obtaining relief from symptoms of fever, there are however, subtle individual characteristics, differentiated by modality, location, sensitivity, feeling, rare and peculiar symptoms of the organism. Pathogenetic actions of the remedies are alike in their main features, but when examined closely their differences are sufficiently well marked to render their distinction easy.

Medicinal Ingredients (dose per unit)

Aconitum napellus 6X, Arseni-cum album 10X, Belladonna 6X, Bryonia 6X, Phosphorus 6X, Pulsatilla 6X, Rhus toxicodendron 6X, Sulphur 6X.

Recommended Dose

Adults and adolescents 13 and over: Take ten drops three times daily or take as directed by health care practitioner.



Other Disorders



COMPLEX #66

ADD Plex

DIN-HM: 80077580

50 mL

Recommended Use

For symptomatic relief of nicotine addiction.

Indications

An excessive (physiological and psychological) dependency on cigarettes. Certain forms of obesity may also be an addiction. Causes are deeply rooted emotional problems, sometimes stemming from sexual unfulfillment and a feeling of worthlessness. Symptoms: Self-hate, general disgust with the world, lassitude or self-destruction. Withdrawal symptoms when drug is withdrawn.

Medicinal Ingredients (dose per unit)

Arsenicum album 10X, Calcarea carbonica 10X, Carbo vegetabilis 10X, Lachesis mutus 10X, Nux vomica 6X, Pulsatilla 6X, Sulphur 6X

Recommended Dose

Adults and adolescents 12 and over: Take ten drops three times daily or take as directed by health care practitioner.



COMPLEX #67

Formula C

DIN-HM 80074703

50 mL

Recommended Use

Homeopathic remedy

Indications

Homeopathic remedy

Medicinal Ingredients (dose per unit)

Arsenicum album 10X, Carbo animalis 10X, Conium maculatum 6X, Kreosotum 10X, Phosphorus 6X, Sepia 6X, Silicea 10X, Sulphur 6X

Recommended Dose

Adults and adolescents 12 and over: Take ten drops three times daily or take as directed by health care practitioner.



COMPLEX #68

COL Plex

DIN-HM: 80077584
50 mL

Recommended Use

For temporary relief from abdominal pain, loss of appetite, diarrhoea, cramping and bloating.

Indications

Diarrhoea or colitis and associated abdominal symptoms, gastroenteritis, irritable bowel syndrome etc. Causes: Abdominal distention, bloated, heavy, flatus, acute and chronic intestinal inflammation, effects of food allergies and sensitivities, bacterial infection of the bowel etc. Symptoms: pain, watery stool, with mucous, exhaustion and weakness after fluid loss.

Medicinal Ingredients (dose per unit)

Arsenicum album 10X, Belladonna 6X, Mercurius corrosivus 10X, Mercurius vivus 10X, Nux vomica 6X, Phosphorus 6X, Podophyllum 6X, Sulphur 6X

Recommended Dose

Adults: Take ten drops three times daily or take as directed by health care practitioner.



COMPLEX #69

DE Complex

DIN-HM 80074780
50 mL

Recommended Use

Homeopathic remedy

Indications

Homeopathic remedy

Medicinal Ingredients (dose per unit)

Aluminium metallicum 10X, Arsenicum album 10X, Belladonna 6X, Cadmium metallicum 10X, Carbo vegetabilis 10X, Ferrum metallicum 10X, Lachesis mutus 10X, Mercurius vivus 10X, Plumbum metallicum 10X, Sulphur 6X

Recommended Dose

Adults and adolescents 12 and over: Take ten drops three times daily or take as directed by health care practitioner.

Other Disorders



COMPLEX #70

FIB-Plex

DIN-HM: 80077966
50 mL

Recommended Use

Homeopathic medicine

Indications

Homeopathic medicine

Medicinal Ingredients (dose per unit)

Calcarea carbonica 10X, Lycopodium clavatum 6X, Mercurius vivus 10X, Phosphorus 6X, Pulsatilla 6X, Rhus toxicodendron 6X, Silicea 10X, Sulphur 6X

Recommended Dose

Adults and adolescents 12 and over: Take ten drops three times daily or take as directed by health care practitioner.



COMPLEX #71

FLA Plex

DIN-HM 80077626
50 mL

Recommended Use

Homeopathic medicine

Indications

Homeopathic medicine

Medicinal Ingredients (dose per unit)

Aconitum napellus 6X, Arsenicum album 10X, Belladonna 6X, Hepar sulphuris calcareum 10X, Lycopodium clavatum 6X, Mercurius vivus 10X, Pulsatilla 6X, Sulphur 6X

Recommended Dose

Adults and adolescents 12 and over: Take ten drops three times daily or take as directed by health care practitioner.



COMPLEX #72

Imun Plex

DIN-HM: 80074777
50 mL

Recommended Use

Homeopathic remedy

Indications

Homeopathic remedy

Medicinal Ingredients (dose per unit)

Arsenicum album 10X, Calcarea carbonica 10X, Lycopodium clavatum 6X, Mercurius vivus 10X, Natrum muriaticum 6X, Rhus toxicodendron 6X, Sepia 6X, Sulphur 6X

Recommended Dose

Adults and adolescents 12 and over: Take ten drops three times daily or take as directed by health care practitioner.



COMPLEX #73

P Formula

DIN-HM 80074783
50 mL

Recommended Use

Homeopathic remedy

Indications

Homeopathic remedy

Medicinal Ingredients (dose per unit)

Belladonna 6X, Calcarea carbonica 10X, Kali carbonicum 6X, Lycopodium clavatum 6X, Nux vomica 6X, Pulsatilla 6X, Sepia 6X, Sulphur 6X

Recommended Dose

Adults and adolescents 12 and over: Take ten drops three times daily or take as directed by health care practitioner.

Other Disorders



COMPLEX #74

Sno Complex

DIN-HM: 80077607
50 mL

Recommended Use

Homeopathic remedy

Indications

Homeopathic remedy

Medicinal Ingredients (dose per unit)

Camphora 6X, Cinchona officinalis 6X, Ignatia amara 6X, Laurocerasus 6X, Muriaticum acidum 10X, Nux vomica 6X, Silicea 6X, Stramonium 6X

Recommended Dose

Adults and adolescents 12 and over: Take 1 spray in the mouth twice daily.



COMPLEX #75

T-Plex Cream

DIN-HM 80063226
50 mL

Recommended Use

Homeopathic medicine for the temporary relief of pain and soreness associated with sprains, minor wounds and non-serious injuries.

Indications

Injuries of all kinds (sports, accidents) such as sprains, dislocations, contusions, effusions of blood and effusions into joint, fractures, etc. Post-operative and post-traumatic oedema and swelling of soft tissues. Inflammatory processes and degenerative processes associated with inflammation on the various organs and tissues.

Medicinal Ingredients (dose per unit)

Aconitum napellus 6X, Arnica montana 6X, Bellis perennis 4X, Bryonia alba 6X, Calendula officinalis 4X, Chamomilla 4X, Echinacea 4X, Echinacea purpurea 4X, Hamamelis virginiana 4X, Hepar sulphuris calcareum 10X, Hypericum perforatum 6X, Millefolium 4X, Ruta graveolens 6X, Symphytum officinale 8X

Recommended Dose

Adults: Apply cream to affected area. Use as needed.

Glossary

GLOSSARY

Nervous System Disorders

Complex #01 B-Tonic	Prevents a wide spectrum of disorders of the nerve-tissue within the cranium. Maintains healthy condition of the cerebral. Combination of remedies is a factor in preventive action and maintenance of good healthy brain.
Complex #02 EPI	Epilepsy combination reduces cramps and hardening of muscles, trembling of limbs, twitching and jerking of muscles, shooting pain with general debility.
Complex #03 Headache	Headache remedies in the combination reduces head pain in the upper cervical region. Discomfort caused by ageing of the ocular muscles and the lens.
Complex #04 Memory	Memory combination helps to prevent degenerative changes in the brain due to neurological illness.
Complex #05 Migraine	Migraine is usually one-sided pain in the cervical region of the head. This combination of remedies would alleviate the symptoms accompanied by visual disturbances, anxiety, tension, dizziness, vomiting, and nausea worse after stress and fatigue.
Complex #06 Neuralgia Complex	Relieves pain associated with the group of cranial nerves.
Complex #07 Sleeplessness	Combination of remedies help to establish a regular sleep pattern. Symptoms commonly indicated in the elderly people of waking up prematurely and staying awake are generally alleviated.

Respiratory System Disorders

Complex #08 Hay Fever	A catarrhal inflammation of the mucous lining of the nose and sinuses. This combination provides relief from runny nose, itchy watery eyes and sinus congestion.
Complex #09 Bactro Plex	Uses nosodes for relief of bacterial infections causing itching, swelling, soreness and aching in throat when swallowing. Helps to alleviate loss of voice.
Complex #10 Viral Plex	Uses nosodes to prevent viral inflammation of the lining of the air passage of lungs and helps to dispel any obstruction in the airway, by coughing.
Complex #11 A.S.T.M.	Asthma is a disorder that causes the airways of lungs to swell and contract. This combination provides relief from asthemic symptoms.
Complex #12 Coryza	Coryza also known as Rhinitis, which is inflammation of the mucous membrane of the nose. This remedy combination provides relief of symptoms causing profuse nasal discharge, sneezing, sore throat, swollen eyes and throat.
Complex #13 Cough Syrup	Cough Syrup mixture provides homeopathic management of symptoms causing cough due to inflammation of air passages of the lung, laryngeal irritation, hoarseness, sore throat and common cold.
Complex #14 Flu Plex	Flu is a common name used for Influenza. This homeopathic combination of remedies will provide relief of symptoms of chills and fever associated with cold and influenza.

Cardiovascular System Disorders

Complex #15 V.V. Complex	Varicose Veins are caused by a valvular dysfunction resulting in lack of blood flow which causes the vein structures to become twisted and swollen. This homeopathic combination would relieve aching in legs and reduce swelling of ankles and feet.
Complex #16 H.T. Complex	Heart Tonic is a factor in normal growth and development of healthy heart. To support biological functions which play a key role in the maintenance of good health.
Complex #17 H.B.P.	Hypertension means a sustained elevation of blood pressure at rest. The etiology of primary high blood pressure is unknown. This combination of remedies is a factor in preventive action and in the maintenance of good healthy heart.

Blood Disorders

Complex #18 Anaemia	Anaemia is a class of blood cell disorders. It is characterized, an abnormally low level of red blood cells or haemoglobin. The etiologies of anaemia are multifactorial. This homeopathic combination would assist to enhance the body's ability to manufacture healthy red blood cells.
--------------------------------------	-------------------------------------------------------------------------------------------------------------------------------------------------------------------------------------------------------------------------------------------------------------------------------------------

Gastrointestinal Disorders

Complex #19 Constipation	Constipation is irregular and erratic bowel actions, with a failure to establish a normal (daily) rhythm of stool evacuation. Constipation is caused by fiber-poor dietary habits and lack of exercise. Stress and emotional upset can exacerbate constipation. This remedy is used to obtain relief from constipation.
Complex #20 Diarrhoea	Diarrhoea is defined as an increased volume, fluidity and frequency of bowel movements. Symptoms include abdominal pain, loose, watery stools, cramps and fever. This combination is used for the relief of diarrhoea.
Complex #21 Haemorrhoid	Haemorrhoids are the varicose veins of the anal vessels. Symptoms include pain, itching, discomfort, and bleeding. Haemorrhoids are caused by excessive strain during elimination of feces. This combination is used for relief of symptoms and pain associated with Haemorrhoids.
Complex #22 Dyspepsia	Dyspepsia is a digestive distress or upset due to many different causes such as weakness of indigestion, flatulence and nausea. This combination would alleviate symptoms of digestion disorder.
Complex #23 Intestinal Colic	Intestinal Colic is an abdominal distress due to the spasm or obstruction of intestines. Abnormal peristaltic movement of an irritated gut. This combination of remedies would relieve abdominal pain.
Complex #24 N&V Complex	Nausea and vomiting is the acute regurgitation of the contents of the stomach, often forcefully. Nausea, a desire to vomit, is a symptom in itself of numerous disorders that maybe the result of motion sickness, emotional upset, early pregnancy, food poisoning and bacterial or viral infection. This combination would help to relieve the symptoms of nausea.

GLOSSARY

Gastrointestinal Disorders (cont.)

Complex #25 Stomach Tonic	Stomach Tonic is a preparation for inflammation of the mucous membranes of the stomach, mouth and tongue. Causes include infection, trauma or hypersensitivity to toxic agents. Symptoms include fetid breath odour. This combination would prevent and provide relief of stomach irritation.
Complex #26 Toothache	Toothache is caused by the inflammation of the mouth, resulting in pain, irritability and discomfort. Symptoms include soreness, offensive odour (halitosis), loss of taste, restlessness, and interrupted sleep. These homeopathic remedies would provide relief of toothache.
Complex #27 Worms	Any member of the vermin family, the common being hookworm, pinworm, round worm and tapeworm. Infection of the small or large intestine by intestinal parasites. Symptoms include abdominal pain, diarrhoea, anaemia, weight loss, anal irritation, Insomnia and enuresis. This combination is used for eliminating parasites and provide relief from symptoms of anal irritation and itching.

Biliary, Hepatic, Pancreatic, Prostatic, Lung, Lymph & Splenic Disorders

Complex #28 BIL Complex	Biliary Complex is a factor in normal growth and development. The yellowish brown or green fluid secreted by the liver is called bile, or bile acids. The condition marked by constipation, headache and absence or loss of appetite (anorexia), due to excess of bile is called biliousness.
Complex #29 LIV Tonic	Liver Tonic is a factor in the maintenance of good health. A viral or amoebic infection that causes inflammation of the liver cells. There are two forms; infective (epidemic jaundice) and serum (homologous serum jaundice). Serum hepatitis is more severe. The amoebic form presents either as an acute or chronic abscess.
Complex #30 LNG	Lung Complex is to support biological functions which play a key role in the maintenance of good health.
Complex #31 Lympho Plex	Lympho Plex is used to fight inflammation of tissue beneath the skin caused by streptococcal organism. Symptoms are pain, high fever and conditions of cellular ailments due to degeneration.
Complex #32 Pan Complex	Pancreatic combination of homeopathic remedies is used to help prevent inflammation of the pancreas, which occurs in either acute, subacute or chronic forms, usually associated with a diseased gall bladder.
Complex #33 Prostate	Prostate; the inability to pass urine and empty the bladder by male. Inflammation of the urinary bladder or urethra resulting in frequent urination day or night, which may be foul smelling, cloudy and occasionally bloody. This combination is used to relieve symptoms and pain associated with inflammation of the prostate gland.
Complex #34 SPL	Spleen; an enlargement of the spleen as the result of many diseases. Malaria is often the cause. It is encountered also in certain chronic infections, such as chronic anaemia, blood disorders and cirrhosis of the liver. This homeopathic combination is a factor in the maintenance of good health.

Genitourinary Disorders

Complex #35 Bed Wetting	Bed wetting is involuntary escape of urine during sleep; also known as enuresis. Loss of normal bladder control associated with bed – wetting and incontinence. This unique homeopathic combination is used for relief if “Incontinentia”; inability to retain urine discharge.
Complex #36 NEP Complex	Nephritis is inflammation of the kidneys; also called Bright’s Disease. A tendency to dropsy which an effusion of fluid into the tissue or cavities of the body. When the kidneys become inflamed following a bacterial infection this disorder is termed pyelonephritis. Symptoms include colic in the loin, sever groin pain, nausea, anxiety and skin rash. This combination is a factor in the maintenance of good kidney and bladder health.
Complex #37 MV Complex	Male Vitality Plex of remedies is a factor to support biological functions which play a key role in the maintenance of good healthy sexual interest and promote testosterone production in men aged 30 to 55 years old. Also helps to support emotional aspects of sexual health, specifically for depressive states associated with sexual inadequacy; helps sperm quality, erection, venery desire, seminal motility, libido and to enhance virility.
Complex #37 Cystitis	Cystitis is inflammation of the urinary bladder. This unique combination of homeopathic remedies would relieve the precipated symptoms of painful frequent urination, blood in urine, foul smelling, and crystalline deposit in urine.
Complex #37 Urinary Tract Infection	Urinary Tract Infection combination is used to help paralysis of bladder, infection, diabetes, post-operational retention of urine and loss of bladder tone causing inability to pass urine.

Female Disorders

Complex #38 B Plex	Breast Plex is a factor in normal growth and development of the mammary gland and maintenance of good health of the breasts.
Complex #39 FV Tonic	Female Vitality Tonic is to support biological functions which play a key role in the maintenance of emotional aspect of sexual health and to stimulate sexual desires. Helps to enhance physical capacity and performance in individuals with stable cardiovascular disease (CVD).
Complex #40 V Itch	V-Itch (Vaginal-Itch): This unique homeopathic combination is a factor in maintenance of the conditions of the inflamed female genital canal extending from uterus to vulva and genito-urinary tract.
Complex #41 Menopause	Menopause is a change in a woman’s life, when cessation of the menstrual flow occurs. The symptoms of climacterics sets in a woman’s life when active reproductive cycle of ovulation ends; there is diminution in the menstrual flow and nervous disturbances, such as mental unrest begins. This combination helps the female to manage the symptoms of menopause like headaches, hot flashes, depression, and insomnia.
Complex #42 Menses	Menses combination of homeopathic remedies is to support biological functions which play a key role in the maintenance of good health of women during their menstrual cycle.

GLOSSARY

Locomotor System Disorders

Complex #45 Cramps	Cramps combination reduces and prevents contraction of muscles which causes spasms. It therefore acts as antispasmodic remedy to protect relief of muscular soreness and cramps.
Complex #46 Joints Plex	Joints Plex is helpful in inflammation of the soft tissues such as muscles, bursae, tendons and arthritic painful joints accompanied with swellings. It also helps to prevent arthritis caused by damage to the cartilage surrounding bones in joints.
Complex #47 Pain Plus Relief	Pain Relief Plus is a homeopathic combination to help relieve aching sensation in low back, lumbar, sacroiliac regions and causing radiating pain along the distribution of the sciatic nerve.
Complex #48 Sprain & Strain	Sprain and Strain is a unique homeopathic combination to help muscles, tendons, soft tissues and ligaments which may be stretched, torn and bruised; causing agonizing neurologic pain, swelling and incapacity of joints to function, and regain normal function.

Skin Disorders

Complex #49 Acne	Acne is a chronic inflammation of the sebaceous glands of the skin, with the eruption of hard elevations and red areas of infection (usually on the face). This combination prepared for relief of acne is a factor in the maintenance of good healthy facial skin.
Complex #50 Eczema	Eczema is a chronic skin condition of allergic origin reaction. This homeopathic combination will help provide relief from the symptoms of the eczema, such as blisters, dry reddish colour skin tone accompanied with inflammation.
Complex #51 Shingles	Shingles also known as herpes zoster, is an acute generalized disorder or skin disease with patches of distinct vesicles, characterized by the eruption of often round red wheals, not contagious. This combination would help to alleviate the symptoms of shingles.
Complex #52 Leu Complex	Leucoderma is an abnormal whiteness of the skin or albinism in the blood. Depigmentation of the skin occurring in patches, often contrast markedly with the surrounding darker skin. The etiology is unknown. Melanocytes for some reason stop producing melanin which is the pigment responsible for human skin colour. Vitiligo is not present at birth. This combination, however, would help to relieve the symptoms of acquired Leucoderma, often caused by some other underlying disorder, such as diabetes, anaemia or thyroid dysfunction.
Complex #53 Psoriasis Complex	Psoriasis is a chronic disfiguring disease of the skin in which Erythromatous areas are covered with adherent scales. The etiology is unknown, but there is often a hereditary tendency. This Psoriasis combination would give relief from symptoms such as skin redness, irritation and scales.
Complex #54 Scalp Tonic	Scalp Tonic is a unique combination of homeopathic remedies having a wide application for symptoms characterized by redness due to inflammation, irritation, multiple small vesicles, serous discharges, ulceration and crusting, accompanied with pain, itching, burning, pruritus of scalp, etc
Complex #55 Warts	Warts are a small horny excrescence on the skin, caused by virus infection of the skin. A family of viruses called the human papilloma virus. This warts combination would provide relief from its symptoms.

Eye & Ear Disorders

Complex #56 Ear Tonic	Ear Tonic combination would alleviate infection of the middle ear (Otitis Media), which is a common occurrence in children due to exposure to drafty, cold weather conditions.
Complex #57 Vertigo	Vertigo combination would relieve sensation of dizziness and giddiness which causes vertigo.
Complex #58 Cataract Plex	Cataract Plex combination would help loss of visual acuity (Clearness), loss of colour vision, veiling glare which are symptoms associated with cataract. This complex of homeopathic remedies is a factor in maintenance of healthy eyes.
Complex #59 Eye Tonic	Eye Tonic combination would help people with conjunctivitis (pink eye), pain, inflammation of the eye, and discomfort due to dry eyes.

Endocrine Disorders

Complex #60 DP Plex	Diabetes is a disease characterized by excessive flow of urine called polyuria; it is also a disorder in which the body fails to regulate blood sugar levels. This combination would give relief to symptoms such as debility, loss of appetite, frequent urination, excess blood sugar, itching skin, and nausea.
Complex #61 OB Plex	Obesity is mainly due to fat rather than the bone and muscle; corpulency. An unusual development of flesh or fat in the proportion to the build of the body, excessive body weight. This combination of homeopathic remedies is a factor in normal growth and development of body weight ratio to maintain good health. Helps to prevent symptoms of fatigue, slowness of responses, and overweight.
Complex #62 Thy Plex	Thyroid Plex is to support biological functions which play a key role in the maintenance of good health of a gland of internal secretion situated in the lower front region of the neck called, thyroid.

Psychiatric Disorders

Complex #63 Chronic Fatigue	Chronic Fatigue combination will help to overcome weariness, usually from overexertion; lack of energy and exhaustion. Useful for gradual recovery to health after serious illness, disease, post surgery and gaining strength.
Complex #64 ANX Plex	Anxiety combination would alleviate feeling of fear, apprehension, uneasiness and dread.

Infections & Fever

Complex #65 Fever Plex	Fever Plex combination would help to relieve an acute infection in children and adults, with severe glandular involvement, causing rise in body temperature above 98 degrees F (36.7 degrees C). Also would alleviate symptoms of intermittent fever, general malaise, weakness, lethargy, irritability, no appetite, etc.
-----------------------------------------	----------------------------------------------------------------------------------------------------------------------------------------------------------------------------------------------------------------------------------------------------------------------------------------------------------------------------

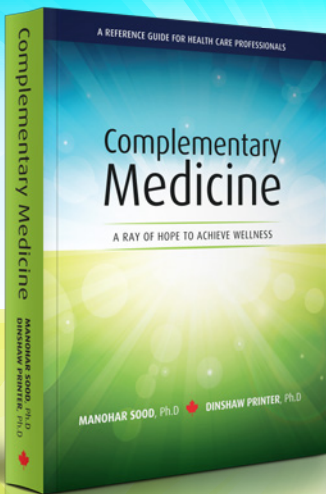
GLOSSARY

Other Disorders

Complex #66 ADD Plex	Cramps combination reduces and prevents contraction of muscles which causes spasms. It therefore acts as antispasmodic remedy to protect relief of muscular soreness and cramps.
Complex #67 Formula C	Joints Plex is helpful in inflammation of the soft tissues such as muscles, bursae, tendons and arthritic painful joints accompanied with swellings. It also helps to prevent arthritis caused by damage to the cartilage surrounding bones in joints.
Complex #68 COL Plex	Pain Relief Plus is a homeopathic combination to help relieve aching sensation in low back, lumbar, sacroiliac regions and causing radiating pain along the distribution of the sciatic nerve.
Complex #69 DE Complex	Sprain and Strain is a unique homeopathic combination to help muscles, tendons, soft tissues and ligaments which may be stretched, torn and bruised; causing agonizing neurologic pain, swelling and incapacity of joints to function, and regain normal function.
Complex #70 FIB Plex	Acne is a chronic inflammation of the sebaceous glands of the skin, with the eruption of hard elevations and red areas of infection (usually on the face). This combination prepared for relief of acne is a factor in the maintenance of good healthy facial skin.
Complex #71 FLA Plex	Eczema is a chronic skin condition of allergic origin reaction. This homeopathic combination will help provide relief from the symptoms of the eczema, such as blisters, dry reddish colour skin tone accompanied with inflammation.
Complex #72 Imun Plex	Shingles also known as herpes zoster, is an acute generalized disorder or skin disease with patches of distinct vesicles, characterized by the eruption of often round red wheals, not contagious. This combination would help to alleviate the symptoms of shingles.
Complex #73 P Formula	Leucoderma is an abnormal whiteness of the skin or albinism in the blood. Depigmentation of the skin occurring in patches, often contrast markedly with the surrounding darker skin. The etiology is unknown. Melanocytes for some reason stop producing melanin which is the pigment responsible for human skin colour. Vitiligo is not present at birth. This combination, however, would help to relieve the symptoms of acquired Leucoderma, often caused by some other underlying disorder, such as diabetes, anaemia or thyroid dysfunction.
Complex #74 SNO Complex	Psoriasis is a chronic disfiguring disease of the skin in which Erythromatous areas are covered with adherent scales. The etiology is unknown, but there is often a hereditary tendency. This Psoriasis combination would give relief from symptoms such as skin redness, irritation and scales.
Complex #75 T-Plex Cream	Scalp Tonic is a unique combination of homeopathic remedies having a wide application for symptoms characterized by redness due to inflammation, irritation, multiple small vesicles, serous discharges, ulceration and crusting, accompanied with pain, itching, burning, pruritus of scalp, etc

Complementary Medicine

A RAY OF HOPE TO ACHIEVE WELLNESS



**A REFERENCE
GUIDE FOR HEALTH CARE
PROFESSIONALS**

**MANOHAR SOOD, Ph.D
DINSHAW PRINTER, Ph.D**

Available at
amazon.com



Homeostasis is a line of premium quality Homeopathic remedies manufactured in Canada. The formulations in this line have been compounded and evaluated in clinic for the last 25 years by a well-known, internationally trained homeopathic practitioner, Dr. Manohar Sood. He has been a registered Homeopath by the College of Homeopaths, Ontario since April 2015.

Dr. M. Sood's collective expertise and experience is captured in a comprehensive line of homeopathic remedies that spans traditional formulations to non-traditional, complex combinations.

Each homeopathic product is carefully compounded in a site-licensed facility and the quality of each remedy is assured through rigorous quality control process that includes raw material qualification to final release of finished product.



PROUDLY CANADIAN

Disclaimer

This booklet is a guide for Professional Use Only. Please refer to product label for proper usage. Consult a health care practitioner if symptoms persist or worsen. Consult a health care practitioner before use if you are pregnant or breastfeeding and when given to children.

For further enquiries, please contact info@neihomeostasis.com